

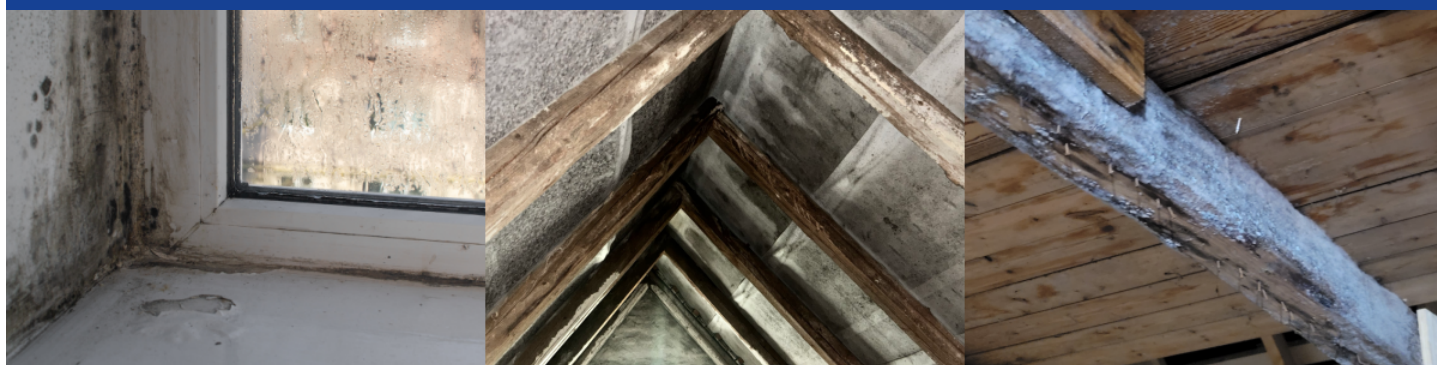
# MR20

MOULD REMEDIATION

## Mould cleaning and disinfection



**MR20 is an effective and easy-to-use agent for cleaning and disinfection of mould and mal odours in the home.**



### MR20 product information



- **Cleans and removes mould infestations**
- **Disinfects surfaces with bacterial growth**
- **Tested as indoor climate neutral**
- **Effectively removes mal odours**
- **Coverage: min. 0.5 m<sup>2</sup> per litre.**

### Area of application

MR20 is an effective and easy-to-use special agent for cleaning and disinfecting mould and for disinfecting rising sewage. MR20 can be used to eliminate odours caused by mould, mould, sewage, dead animals and corpses.

Can be used by both professionals and private individuals.



## Technical information

Product information	Applications for mould
<p>MR20 is an effective and easy-to-use special agent for cleaning and disinfecting mould and for disinfecting rising sewage. MR20 can also be used for odour remediation in cases of mould, mould, sewage, dead animals and corpses.</p> <p>MR20 is tested according to EN standards EN 1650, EN 1276 and EN 13697. MR20 is included/registered in the database for building products that can be used/included in Nordic Ecolabelled buildings.</p>	<p>Vacuum the mouldy surface thoroughly with a vacuum cleaner with HEPA-filter (14). MR20 can be diluted and applied with a garden sprayer. Work the surface with a stiff nylon brush. Rinse the cleaned surface with the MR20 solution and leave to dry for 24 hours, after which the surface can be wiped with clean water. Ensure good ventilation before, during and after treatment.</p> <p><b>ATTENTION!</b> The product may corrode some metals and bleach certain coloured surfaces/materials. Perform a test before use.</p>

Use for disinfection and bad odours	Occupational health and safety
<p><b>MR20 can be used for disinfection</b> in connection with rising sewage and other floods where there is a risk of infection from bacteria, viruses and other microorganisms. Activated MR20 is used for disinfection. <b>Activated MR20</b> may only be used by professionals and requires training at PROTOX.</p> <p><b>Bad odours indoors</b> in buildings caused by mould, mildew, sewage, dead animals and corpses can be removed with MR20 by wetting or washing down the surfaces in the room with MR20. The product can be mist sprayed on all surfaces. Mist spraying is a particularly effective method for hard-to-reach areas and rooms. Drying time is 4-8 hours at 20°C.</p>	<p>The released chlorine dioxide is highly reactive and reacts instantly with the mould, while a possible excess is very quickly broken down by sunlight. 24 hours after cleaning with MR20, all chlorine dioxide is decomposed.</p> <p>When working with mould-infected surfaces, the use of a particle filter (P3) is always recommended. For prolonged work with MR20, this P3 filter should be supplemented with a B2/P3 combination filter.</p> <p>Working with activated MR20 requires the use of protective equipment and the use of B2/P3 filter. According to SBI instruction 281, the above filter should be supplemented with an A2-filter.</p>

Product data	CLP classification
<p><b>Packaging:</b> 5.0 litre, 2.5 litre and 1.0 litre canister (Concentrate) and 0.5 litre spray bottle (Ready to use)</p> <p><b>Dilution:</b> Max. 1 part MR20 to 3 parts water</p> <p><b>Application temperature:</b> &gt; 5°C.</p> <p><b>Drying time:</b> After application, ventilate the room. After 24 hours, the last traces of chlorine dioxide will have decomposed</p> <p><b>pH:</b> &gt; 9 before activation</p> <p><b>Odour:</b> Faint smell of chlorine (swimming pool). After activation - strong chlorine odour</p> <p><b>Cleaning:</b> Rinse used equipment with clean water</p> <p><b>Storage:</b> Store in a cool and preferably dark place, do not Exposed to temperatures above 50°C or mixed with acids products. Does not tolerate frost.</p> <p><b>Shelf life:</b> Shelf life up to 2 years after production date. After activation max. 1 month.</p> <p><b>Disposal:</b> Empty packaging can be disposed of with household waste.</p> <p>PROTOX ApS, Fabriksvej 19, 6000 Kolding, Denmark Phone +45 75 50 40 22, info@protox.dk, protox.dk</p>	<p>Contact with acids liberates toxic gas.</p> <p>Safety data sheet available on request.</p> <p><b>Contains</b></p> <p>Water, Sodium Chlorite, Laurylamine Dipropylenediamine and stabilising buffer.</p> <p><b>Safety information</b></p> <p>‘Use biocides safely. Always read the label and product information before use.’</p> <p>Always read the safety data sheet before use.</p>